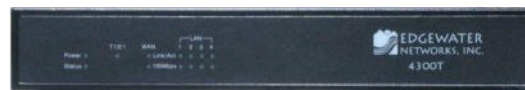


# EDGEMARC 4300T

## Converged Network Appliance



---

---

### Key Features

---

- T1 or ethernet WAN access router
- Integrated 4 port managed ethernet switch with VLAN support
- VPN/Firewall
- VoIP application layer gateway (SIP, MGCP and H.323) resolves NAT/Firewall traversal issues
- QoS: priority queuing, traffic shaping, diffserv marking/policing
- VoIP call admission control
- VoIP survivability
- Passive call quality monitoring (MOS, jitter, latency and more)
- DHCP server
- NAT/PAT
- Management: HTTP, HTTPS, SSH, Telnet, SNMPv1 and V3

### Ideal Solution For:

#### Service providers

- A "VoIP-ready" direct internet access (DIA) router
- Customer premises equipment for hosted PBX and other managed services

#### Enterprise

- Small and medium branch office connectivity offering optional VoIP survivability
- 
- 

The EdgeMarc 4300T is an intelligent, all-in-one networking solution for enterprises and service providers. It reduces costs by simplifying the deployment, management and security of converged voice, video and data networks.

#### **T1 Wide Area Network (WAN) Access Router**

The 4300T provides an integrated T1 CSU/DSU for small and medium office connectivity.

#### **Security**

A stateful packet inspection firewall is used in combination with a VoIP application layer gateway to provide comprehensive "media-aware" security. The 4300T also supports IPSec for secure site-to-site networking.

#### **VoIP**

The 4300T resolves NAT/FW traversal problems for SIP, MGCP and H.323 traffic. It allows a single public IP address to be used for multiple VoIP clients. VoIP survivability is also provided by the 4300T so that local SIP PSTN gateways can be used for inbound/outbound calling during WAN link failures.

#### **Quality of Service**

The 4300T maximizes WAN link utilization while optimizing voice quality using prioritization and shaping.

#### **Call Quality Monitoring**

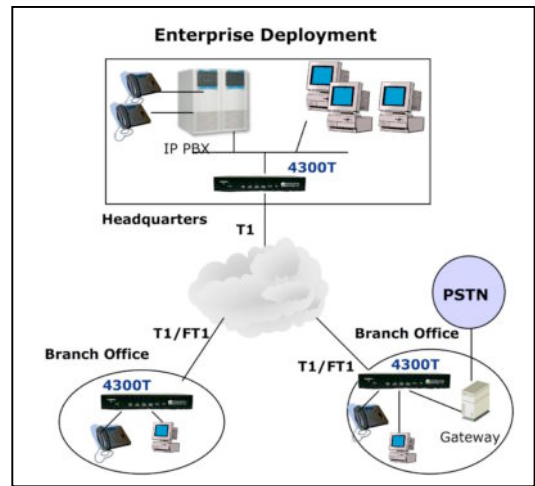
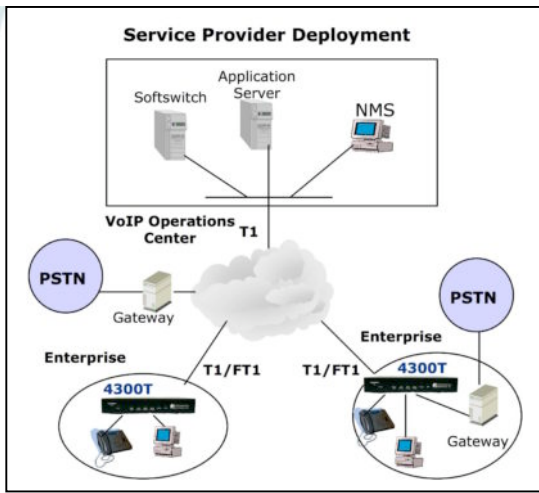
Passive call quality monitoring for each VoIP call includes statistics needed to enforce SLAs and resolve networking problems that negatively affect call quality.

#### **Future-proof Scalability**

The 4300T is a powerful, flexible platform that can be deployed initially as a low-cost WAN access router and then licensed through software for more advanced VoIP features and increased call performance. It is the ideal platform for service providers offering DIA, hosted VoIP and managed security services or enterprises migrating to converged voice and data networks.

To learn more about the EdgeMarc 4300T please contact Edgewater at sales @edgewaternetworks.com or visit our website at [www.edgewaternetworks.com](http://www.edgewaternetworks.com).





## Specifications

### WAN Interfaces

#### T1

- Full or fractional rates
- Framing: ESF
- Line coding: B8ZS
- Line build out: 0,-7.5,-15dB
- Clock: internal or line
- Maintenance: inband loop up/down, manual payload

#### Ethernet

- 10/100 Mbps
- Auto-sensing, full or half duplex

### WAN Protocols

- PPP, Frame relay, HDLC

### LAN Interfaces

- 4 x 10/100 Mbps ethernet ports
- Auto-sensing, full or half duplex
- Managed switch supports VLAN 802.1Q tagging and forwarding for up to 16 unique VLAN Ids

### Hardware

#### Dimensions

- Height (1.7"), Width (10"), Depth (7")
- Weight: 2 lbs.

#### Power

- External power brick: 12V, 3.0A

#### Regulatory

- FCC home and office use, UL, CE, FCC Part 68 and Industry Canada

### Management

- Web based configuration and CLI
- HTTP, HTTPS, SSH, Telnet, SNMPv1/V3 MIB-II
- Syslog support
- Remotely upgradeable (FTP)
- Configuration backup/restore
- Ping, Traceroute, TCPdump

### Software Features

#### VoIP

- SIP, MGCP and H.323 application layer gateway enables a single public IP address to be used for multiple VoIP endpoints
- VoIP survivability provides local call switching to PSTN gateways during WAN link failures (SIP only)

#### QoS

- Class based queuing/prioritization
- Diffserv marking and policing
- Traffic shaping
- VoIP call admission control prevents oversubscription of priority queue

#### Security

- Stateful packet inspection firewall
- VoIP aware firewall dynamically provisions and closes UDP ports used for VoIP calls
- IPSec: 3DES, SHA-1
- NAT/PAT server hides enterprise LAN topology

#### Passive Call Quality Monitoring

- Per call statistics include mean opinion score (average and minimum), jitter, latency, packet loss and much more
- Alarms for poor MOS scores
- Active call count indicators

### Ordering Information

Part Number	Description
EM-4300T-01	4300T: VPN/Router
EM-4300T-15	4300T: EdgeMarc - 15 WAN calls
EM-4300T-30	4300T: EdgeMarc - 30 WAN calls
RM-4300T-19	19" Rack Mount Kit
VOS-SURV-01	VOS VoIP Survivability



Back View